

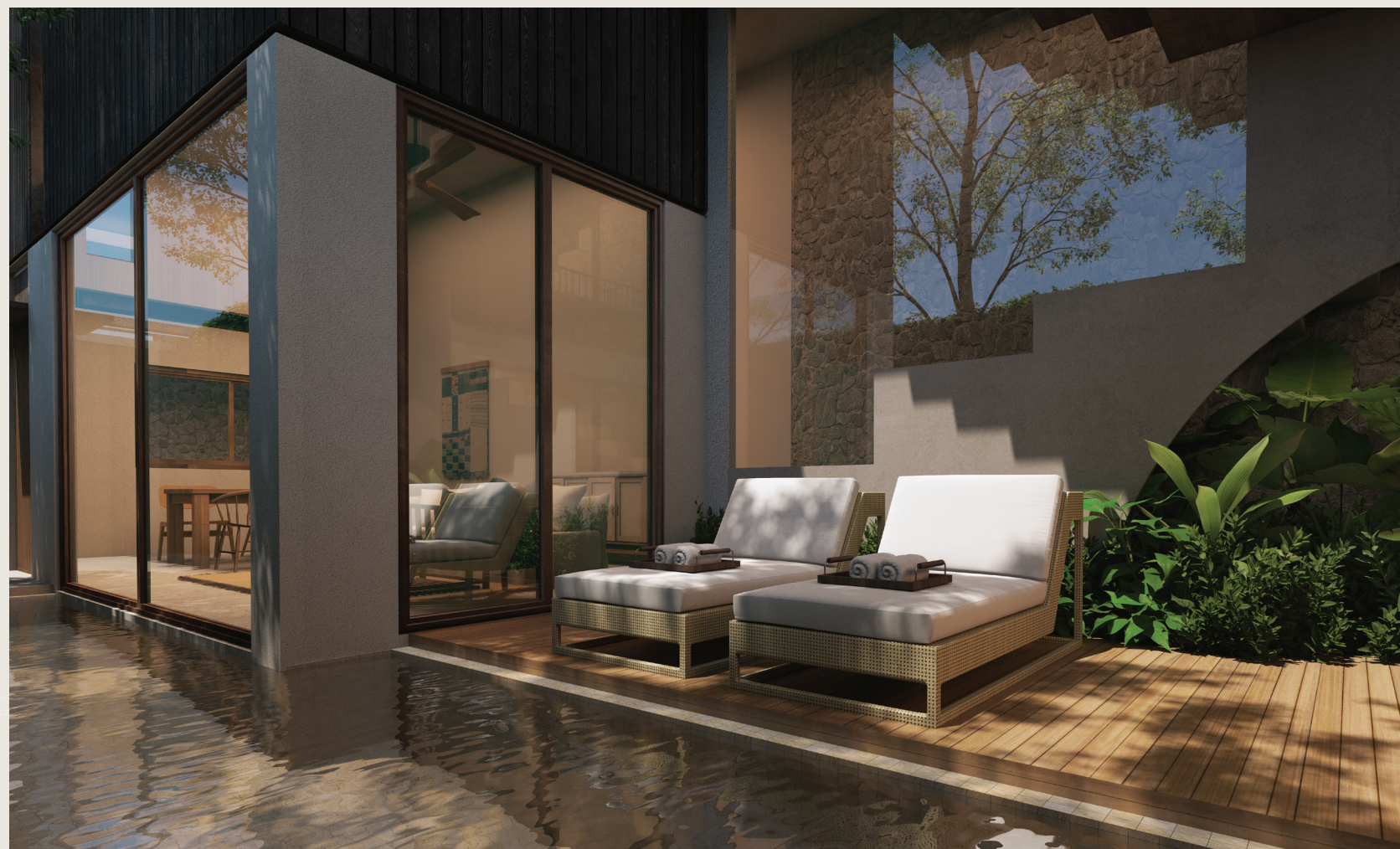
MOSS

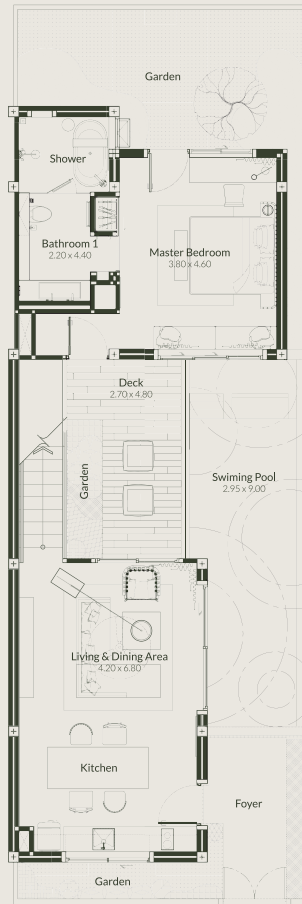
POOL VILLA TYPE 01

Moss Pool Villa is our startup villa. As a duplex, each consists of bedrooms, Living room and dining room are connected to villa terrace, pool and first floor-bedroom. All rooms are connected with beautiful outdoor lighting yet each section has its own privacy and suitable space for functioning. With 360 roof top garden, it ultimately feels like private jungle for yourself.

- 2 Bedrooms
- 2 Bathrooms
- Living & Dining
- Mineral Pool
- Rooftop Garden

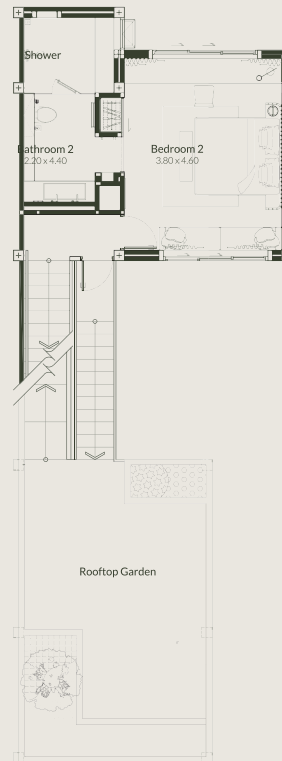
Pool size : 2.95x9 M.
Built Area : 237.8 SQ.M.





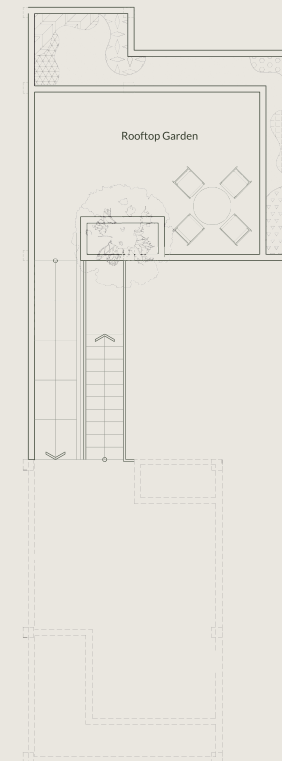
1st FLOOR

- Luxury mineral swimming pool
- High ceiling living room & dining room (4.2 m)
- Master bedroom with bathtub facing the pool
- Large outdoor garden space



2nd FLOOR

- Bedrooms with pool view
- Large outdoor green space with garden connection
- Multi-purpose green area



ROOFTOP

- Large outdoor green space with garden connection



FERN

POOL VILLA TYPE 02

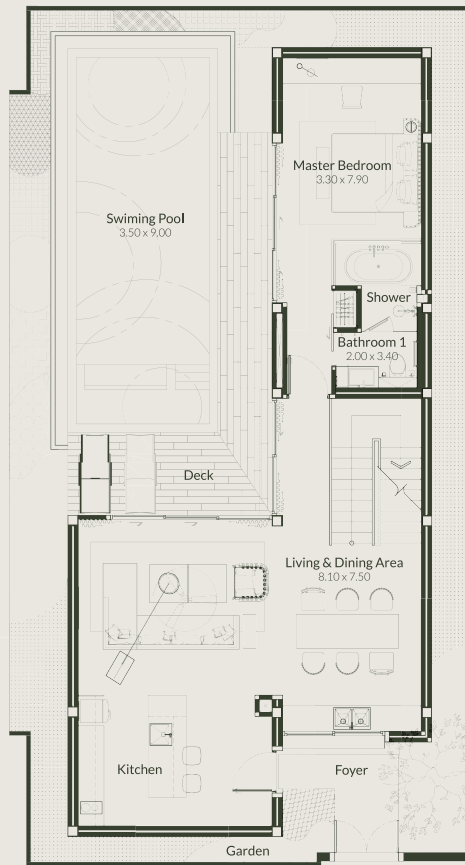
Fern Pool Villa is a three bedroom villa surrounded by the verdant garden. Living area, dining room, all bedrooms are connected with the view of swimming pool. Roof top garden is parallel with the building that provides cozy shade and lighting inside the house for different mood during night and day.

- 3 Bedrooms
- 3 Bathrooms
- Living & Dining
- Mineral Pool
- Rooftop Garden

Pool size : 3.5x9 M.

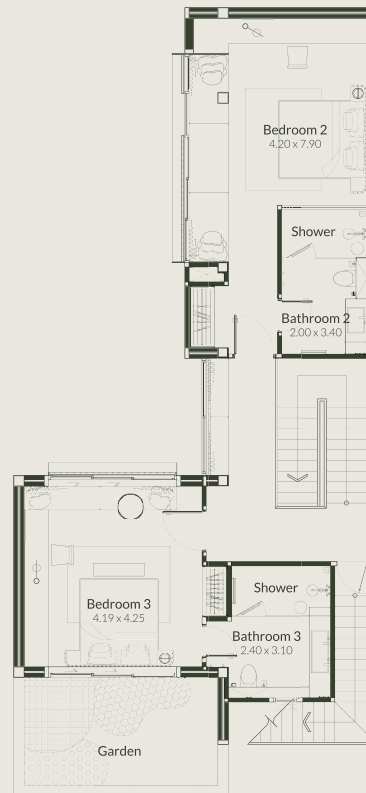
Built Area : 369 SQ.M.





1st FLOOR

- Luxury mineral swimming pool
- Separate spacious kitchen area
- Master bedroom with bathtub facing the pool
- Large outdoor garden space



2nd FLOOR

- Bedrooms with pool view
- Spacious gardening area
- Multi-purpose space with natural lighting



ROOFTOP

- Large outdoor green space with garden connection

PINE

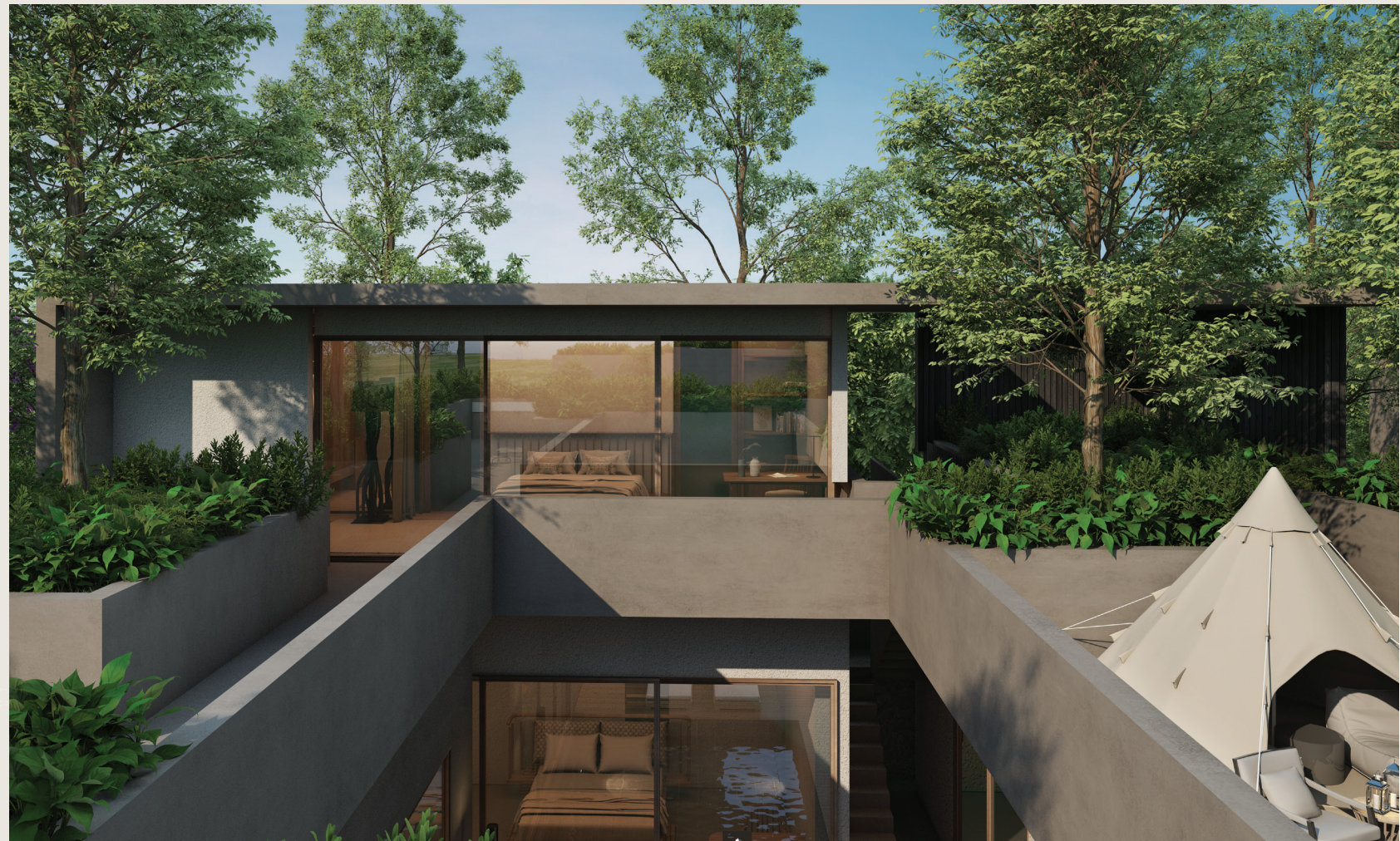
POOL VILLA TYPE 03

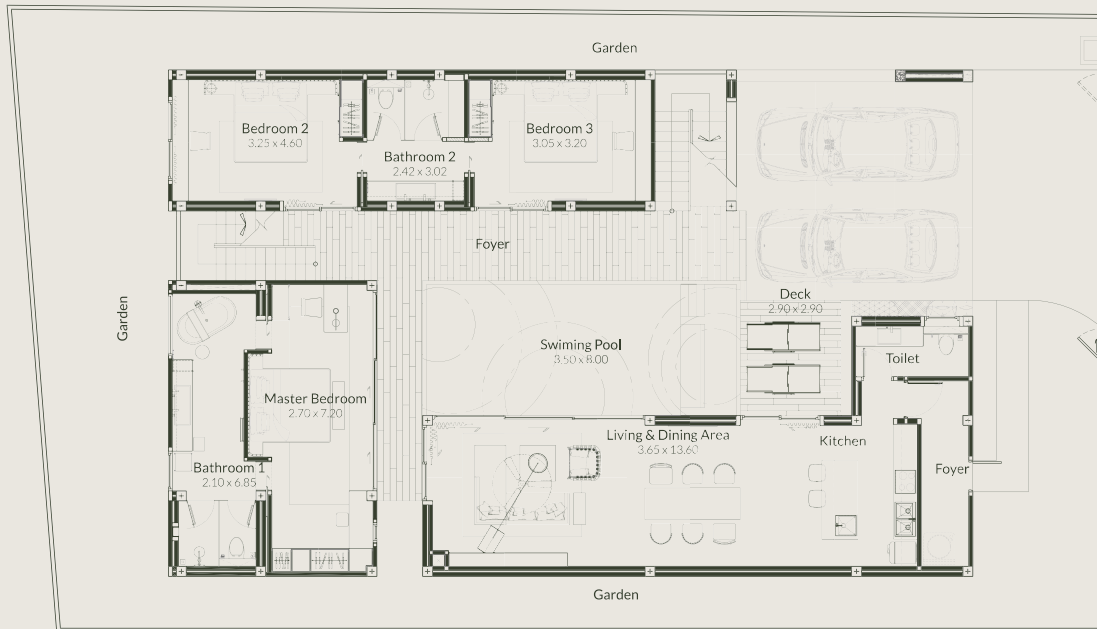
Pine Pool Villa is a four bedroom villa with 2 floors. Living area, dining rooms and first floor-bedrooms are facing the swimming pool, which is located in the midst of the house. Outdoor lighting is set to shine in the courtyard on both floors. Master bedroom is upstairs along with massive rooftop garden. The outdoor space is vast that it can be developed to your lifestyle preferences.

- 4 Bedrooms
- 4 Bathrooms
- Living & Dining
- Mineral Pool
- Rooftop Garden

Pool size : 3.5x8 M.

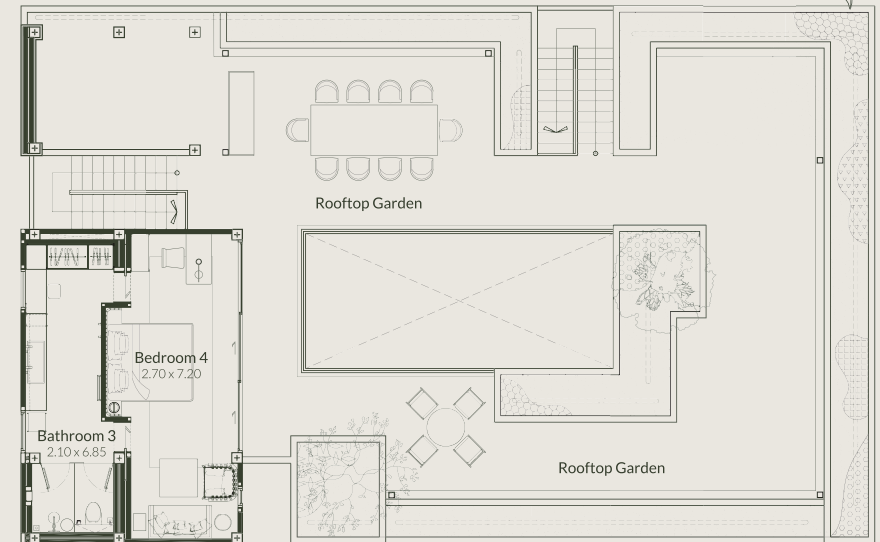
Built Area : 573.8 SQ.M.





1st FLOOR

- Luxury mineral swimming pool
- Separate spacious kitchen area
- Master bedroom with bathtub facing the pool
- Large outdoor garden space
- Car parking (2 cars)



2nd FLOOR

- Bedrooms with pool view
- Spacious gardening area
- Multi-purpose space with natural lighting